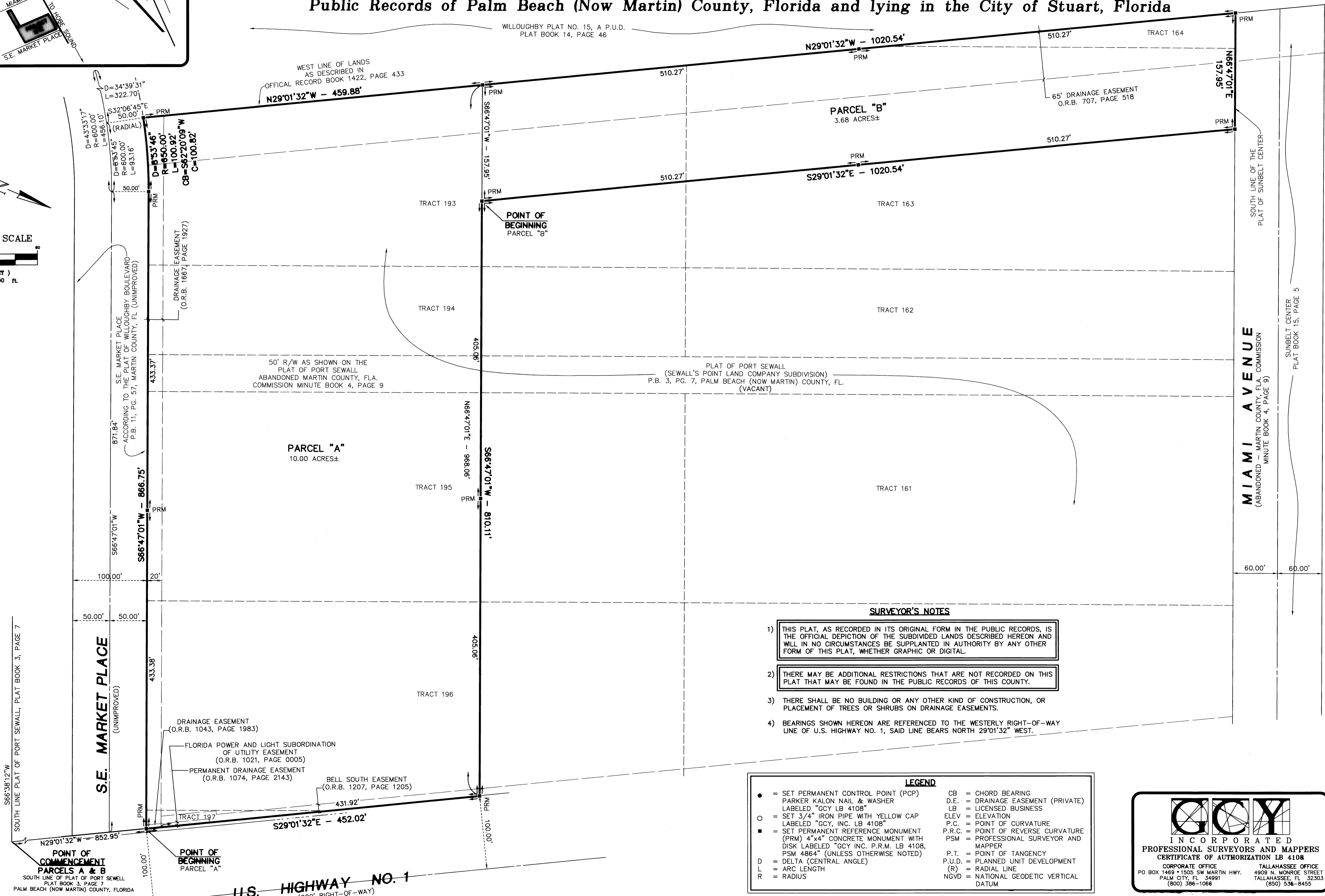
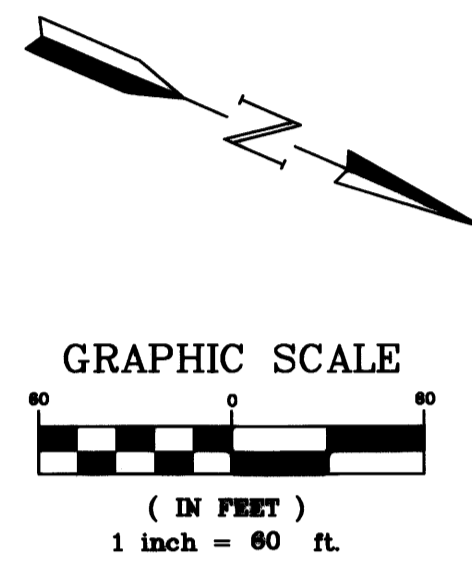
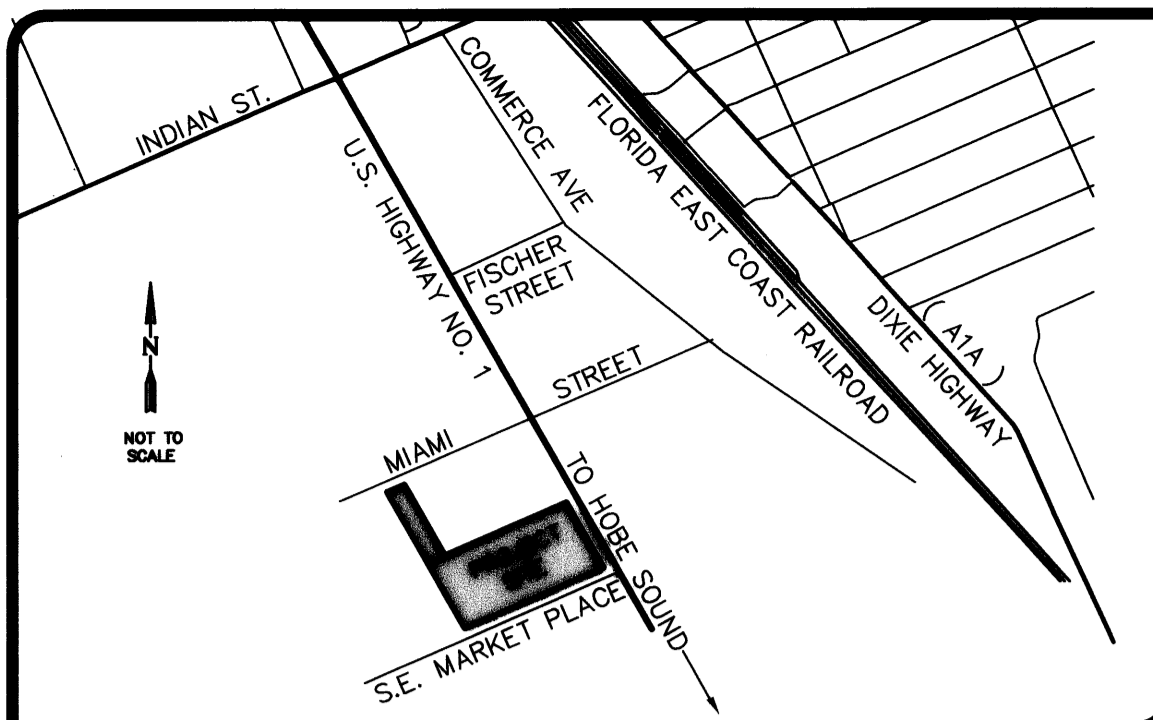


Advantage Ford of Stuart, a P.U.D.

Being a parcel of land lying in the Hanson Grant, Martin County, Florida, said parcel also being a portion of Tracts 163, 164, 193, 194, 195, 196 and 197, according to the plat of Port Sewall (Sewall's Point Land Company Subdivision) as recorded in Plat Book 3, Page 7, Public Records of Palm Beach (Now Martin) County, Florida and lying in the City of Stuart, Florida



- SURVEYOR'S NOTES**
- 1) THIS PLAT, AS RECORDED IN ITS ORIGINAL FORM IN THE PUBLIC RECORDS, IS THE OFFICIAL DEPICTION OF THE SUBDIVIDED LANDS DESCRIBED HEREON AND WILL IN NO CIRCUMSTANCES BE SUPPLANTED IN AUTHORITY BY ANY OTHER FORM OF THIS PLAT, WHETHER GRAPHIC OR DIGITAL.
 - 2) THERE MAY BE ADDITIONAL RESTRICTIONS THAT ARE NOT RECORDED ON THIS PLAT THAT MAY BE FOUND IN THE PUBLIC RECORDS OF THIS COUNTY.
 - 3) THERE SHALL BE NO BUILDING OR ANY OTHER KIND OF CONSTRUCTION, OR PLACEMENT OF TREES OR SHRUBS ON DRAINAGE EASEMENTS.
 - 4) BEARINGS SHOWN HEREON ARE REFERENCED TO THE WESTERLY RIGHT-OF-WAY LINE OF U.S. HIGHWAY NO. 1, SAID LINE BEARS NORTH 29°01'32" WEST.

LEGEND

| | |
|--|---|
| ● = SET PERMANENT CONTROL POINT (PCP) | CB = CHORD BEARING |
| ○ = SET 3/4" IRON PIPE WITH YELLOW CAP | D.E. = DRAINAGE EASEMENT (PRIVATE) |
| ■ = SET PERMANENT REFERENCE MONUMENT | LB = LICENSED BUSINESS |
| (PRM) 4"x4" CONCRETE MONUMENT WITH DISK | ELEV = ELEVATION |
| LABELLED "G.C.Y. INC. P.R.M. LB 4108, PSM 4864" (UNLESS OTHERWISE NOTED) | P.C. = POINT OF CURVATURE |
| D = DELTA (CENTRAL ANGLE) | P.R.C. = POINT OF REVERSE CURVATURE |
| L = ARC LENGTH | PSM = PROFESSIONAL SURVEYOR AND MAPPER |
| R = RADIUS | P.T. = POINT OF TANGENCY |
| | P.U.D. = PLANNED UNIT DEVELOPMENT |
| | (R) = RADIAL LINE |
| | NGVD = NATIONAL GEODETIC VERTICAL DATUM |

G.C.Y. INCORPORATED
PROFESSIONAL SURVEYORS AND MAPPERS
 CERTIFICATE OF AUTHORIZATION LB 4108
 CORPORATE OFFICE: 1489 N. MONROE STREET, TALLAHASSEE, FL 32303
 PALM CITY, FL 34991
 (800) 386-1066